

Interior Design and Furniture of Office Buildings for " Physically Handicapped "

Prof. Saeed Hassan Abd Elrahman

**Professor of Administrative Facilities Design - Department of Interior Design and
Furniture - College of Applied Arts - Helwan University**

Saied-hassan@gmail.com

Assist. Prof. Dr. Noha fakhry Abd El-Salam

**Assistant Professor, Department of Interior Design and Furniture - Higher Institute of
Applied Arts, Fifth Settlement**

Royalscale2009@gmail.com

Researcher. Nardine El-Shaefae

**Interior Design Art Director - Department of Interior Design and Furniture - Faculty of
Applied Arts - Helwan University**

nardineelshaf3y@gmail.com

ABSTRACT

The conditions of individuals who suffer from some disorder in their mobility or activity influence their social and emotional development. The percentage of mobility disability varies from one society to another according to a number of factors, the most important of which are genetic, health and cultural awareness factors and the criteria used to define each manifestation of motor impairment

More recently, in most countries of the world, the number of people with special needs has increased in comparison with the population

As a result of the occurrence of many demographic changes in life and the spread of health factors affecting pregnant women before and during childbirth, which cause disabilities, there has been great interest in groups with special needs at all levels, and their proportions have grown worldwide as follows

- ٨٠% people with special needs are mostly from third world developing countries
 - ١٥% of the world's population with special needs.
 - At the beginning of the ٢١st century, the projected share will be ١٣,٥% of total world population
- The causes of disability are many, including genetic or error during childbirth or during the period of pregnancy, which leads to specific deformities in the fetus, as a result of accidents or injury a disease such as cerebral palsy, polio, muscle spasms or loosening, foot, bone diseases or temporary disabilities such as broken legs or visual disabilities ...etc

KEY WORDS

Disability and health, World Health Organization, people with special needs "mobility"

Research problem

Inadequate administrative facilities in Egypt as a work environment for people with mobility disabilities.

Research Aims

- How to develop an interior design suitable for people with special needs "kinesthetically" and healthy people for the administrative buildings.
- Analyzing the anthropometric and ergonomic measures of the administrative establishment for people with special needs physically.
- Clarify the standards of interior design and furniture in the administrative facility for people with "kinetic" special needs.
- Displaying the impact of modern technology in both interior design and furniture in serving people with special needs in the administrative establishment, with the aim of integrating this category with the rest of society.

Research Importance

- 1- It helps to provide ideas to solve the problems of designing the modified building to suit people with special needs in administrative facilities.
- 2- Provides solutions to design modified administrative furniture that is suitable for people with special needs.
- 3- The positive impact of an environment suitable for people with special needs "kinetically" in the interior design and furniture in the administrative establishment on the efficiency of work performance for both healthy and people with special needs.

Research Hypotheses

- 1- The possibility of having an administrative building suitable for people with special needs and healthy people alike.
- 2- Helping interior design to create a suitable work environment through:
 - Availability of anthropometric and ergonomic measures of administrative origin for people with special needs in Egypt.

The existence of standards for interior design and furniture in the administrative facility for people with special needs "kinetically"

The existence of a role for modern technology in both interior design and furniture in serving people with special needs in administrative origin.

Search Limits

- 1- Time limits: the current era of interior design and furniture modified according to needs.
- 2- Spatial boundaries: represented in the study of the internal environment in the administrative establishment in the new administrative capital.
- 3- Human limits: workers with special needs.
- 4- Interior design and furniture for the administrative establishment through vertical and horizontal movement.

Research Methodology

The analytical descriptive approach: an analytical study of the interior design requirements with the integration of modern technology for an administrative establishment.

Applied approach: by applying the idea to an administrative facility in the new administrative capital.

With the application of the technological study in the interactive environment in the new administrative capital.

Introduction:

Arabs with disabilities struggle to find job opportunities

When we look at the impact of institutional and legal reforms on economic activity and the employment rate, the picture appears that these frameworks have not yet succeeded in achieving comprehensive social inclusion of persons with disabilities in society. People with disabilities face obstacles in finding work and educational attainment, which are basic human rights and a gateway towards achieving equality in the participation of persons with disabilities in social and economic life.

Reports in all Arab countries show that the employment rate for persons with disabilities is much lower than the general average. In general, the employment rate for people with disabilities is half of the general rate for those of working age. The difference is more pronounced for men as the general employment rate for men is 65% compared to 28% - as shown in FIGURE 3 - for men with disabilities. The educational attainment of persons with disabilities is often lower than the general population average. For example, 58% of persons with disabilities in Egypt are considered illiterate, compared to 21% of their peers who do not have a disability.

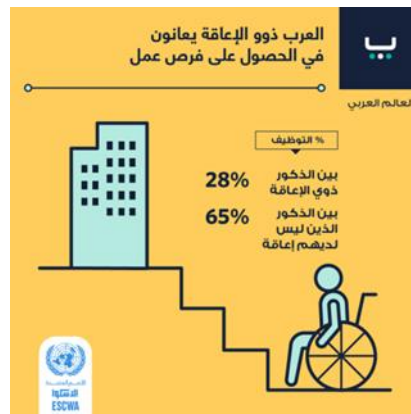


Figure3

Inclusion of persons with disabilities benefits societies and is a key component in achieving development goals, including the United Nations Sustainable Development Goals. This starts with universal access to health care, education, employment and public spaces.

The participation of citizens and governments is responsible for securing equal access to opportunities for all members of society so that families can obtain the required support and individuals can initiate themselves and realize their full potential.

Disability is also a human rights issue - people with disabilities are among the most discriminated against in the world, often experiencing violence, prejudice and denial of independence as well as facing barriers to care.

Disability is a global public health problem - it affects one in seven people worldwide. Everyone is likely to experience a disability at some point in their lives.

Disability is a development priority - it is more prevalent in low-income countries and disability and poverty are mutually reinforcing.

¹ www.disabled.world.٢٦-٠٧-٢٠٢١

¹ www-inclusivecitymaker-com ٦ أغسطس ٢٠٢١

¹ <https://www.braunability.com>

¹ <https://doctormo.ru/ar/anthropometric-studies/>

¹ www.gensler.com--accessible-design-for-all-in-the-post-covid-workplace

¹ www.egyptarch.net/books/disable

¹ <https://www.marh.mam.com/t٤٣٦٥-topic>

<https://irbid.hooxs.com/t٦٢١٧٨-topic>

¹ www-inclusivecitymaker-com/shopping-malls-accessible-people-with-disabilities

¹ https://new-deco.blogspot.com/٠٩/٢٠١٦/blog-post_٢٩.html

¹ <https://iwdfkchtna.com/%D%٨١%D%٩A%D%٨B%D%٨٤.html>

¹ <https://www.teacher-sa.com/showthread.php?t=٢٨٨٢٩>

¹ <https://apps.who.int/iris/bitstream/handle/٩٧٨٩٢٤٠٠١٧١٤٦/٧٨٢٣٦/١٠٦٦٥-ara.pdf>

¹ http://arch-civil-books.blogspot.com/٠٤/٢٠١٢/blog-post_٦٥١١.html

¹ https://ia٨٠٢٨٠٩.us.archive.org/٨/items/aalam_almaarifa/٠٨٦.pdf

¹ www-gensler-com/size-shape-impact-by-design

¹ www-gensler-com/gri/beyond-the-senses

www-gensler-com/next-generation-office-buildings-combine-experience-and-perf

www-gensler-com/webinar-office-buildings-design-strategies-for-a-post-covid

www-gensler-com.preparing-for-the-future-now-with-resilient-design

¹ Metropolismag.com

¹ <https://www.gensler.com/blog/wellbeing-in-the-workplace-has-superpowers>

¹ [Lebowitz](#) [نيكول](#) و [شناعة](#)